

ezW150I & ezW150I/B

The ez-Wheel Series 150 **ezW150I** autonomous wheels are suitable for:

- Industrial trolleys
- Rolling equipment for factories
- Mobile workstations and tools
- ...

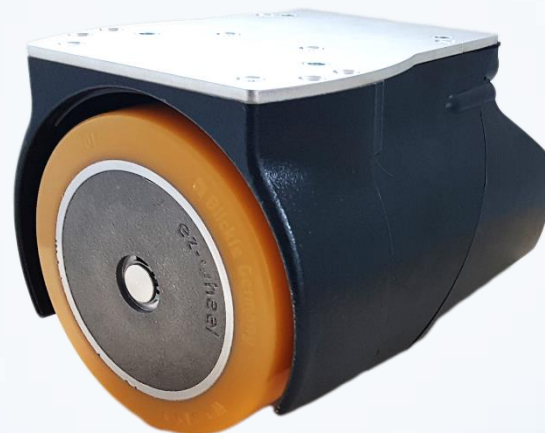
All the components necessary for traction are built into the wheel: an electric gear motor, high energy and long life batteries, a power controller ensuring optimum motor control and battery management and a control interface.

Motor	
Technology	BLDC PM
Gearbox	2-stage helical
Indicative lifespan*	3000 h / 10000 km 1000 000 starts/stops
Nominal speed	166 rpm (4,7 km/h)
Nominal power	170 W (S3, 15% duty cycle, 5min max)
Peak torque	27 Nm
Battery	
Electrochemistry	Ni-MH
Energy	70 Wh (1 battery) 140 Wh (2 batteries)
Indicative lifespan*	2-3 years
Recharge mode	Charger External power
Minimum charging time*	1.5 hour (to 90%)
Interface	
Wired	Analog Serial / CAN
Wireless	no

The wheel can be used inside or outside, over a wide range of temperatures. The components – including the battery – do not need any inspection or maintenance over the product's whole lifespan.

Conditions of use	
Temperature	-10 to +40 °C
IP index	IP43
Maintenance period*	2 years

All values are subject to changes without prior notice. *: Values for reference, based on standard condition testing, may vary with different application cases.



Diameter	150 mm
Type of Tyre	Blickle Extrathane 92 sh.A Flat profile
Speed range (traction)	0 to 5 km/h
Peak pushing effort	35 daN Moves 1000 kg
Nominal performance	15 daN at 4 km/h
Maximum rolling speed	8 km/h
Battery capacity	0 - 70 - 140 Wh
Options	Parking brake /B

The robust assembly can withstand the stresses of knocks and severe vibration and enables the wheel to carry some load.

Weight	
Wheel weight	10 kg
Maximum load	400 kg up to 5km/h

ez-Wheel products are guaranteed 1 year from the date of purchase and 2 years against production defects. Consult the general conditions of sale for more information.

