

### ezW300I /CC & /CCR

The ez-Wheel Series 300 **ezW300I** autonomous wheels are suitable for:

- Industrial handling tools
- Towed rolling material
- Pusher pullers
- ...

All the components necessary for traction are built into the wheel: an electric gear motor, high energy and long life batteries, a power controller ensuring optimum motor control and battery management and a control interface.

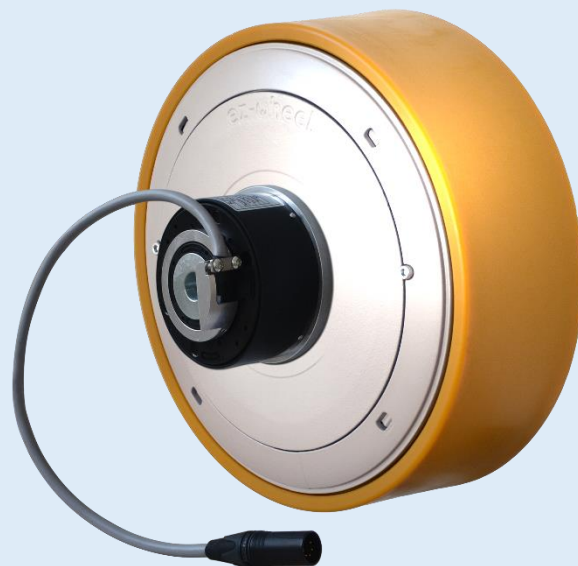
Motor	
Technology	BLDC PM
Gearbox	1-stage helical
Indicative lifespan*	5000 h / 15000 km 1500 000 starts/stops
Nominal speed	110 rpm (6,2 km/h)
Nominal power	200 W (S1)
Peak torque	52 Nm

Battery	
Electrochemistry	Ni-MH long life
Energy	240 Wh
Indicative lifespan*	5-8 years
Recharge mode	Charger Towing /CCR External power
Minimum charging time*	2.5 hours (to 90%)

Interface	
Wired	Serial
Wireless	LR WPAN 2.4 GHz IEEE 802.15.4

The wheel can be used inside or outside, over a wide range of temperatures. The components – including the battery – do not need any inspection or maintenance over the product's whole lifespan.

Conditions of use	
Temperature	-20 to + 60 °C
IP index	IP54
Maintenance period*	5 years



<b>Diameter</b>	300 mm
<b>Type of Tyre</b>	PU 80 sh.A Flat profile
<b>Speed range (traction)</b>	0 to 9 km/h
<b>Peak pushing effort</b>	35 daN Moves 1000 kg
<b>Nominal performance</b>	12 daN at 6 km/h
<b>Maximum rolling speed</b>	12 km/h
<b>Battery capacity</b>	240 Wh
<b>Options</b>	Regen charge (towing) /CCR

The robust assembly can withstand the stresses of knocks and severe vibration and enables the wheel to carry some load.

Weight	
Wheel weight	18 kg
Maximum load	300 kg 260 kg at 4 km/h 130 kg at 12 km/h

ez-Wheel products are guaranteed 1 year from the date of purchase and 2 years against production defects. Consult the general conditions of sale for more information.

All values are subject to changes without prior notice. \*: Values for reference, based on standard condition testing, may vary with different application cases.

